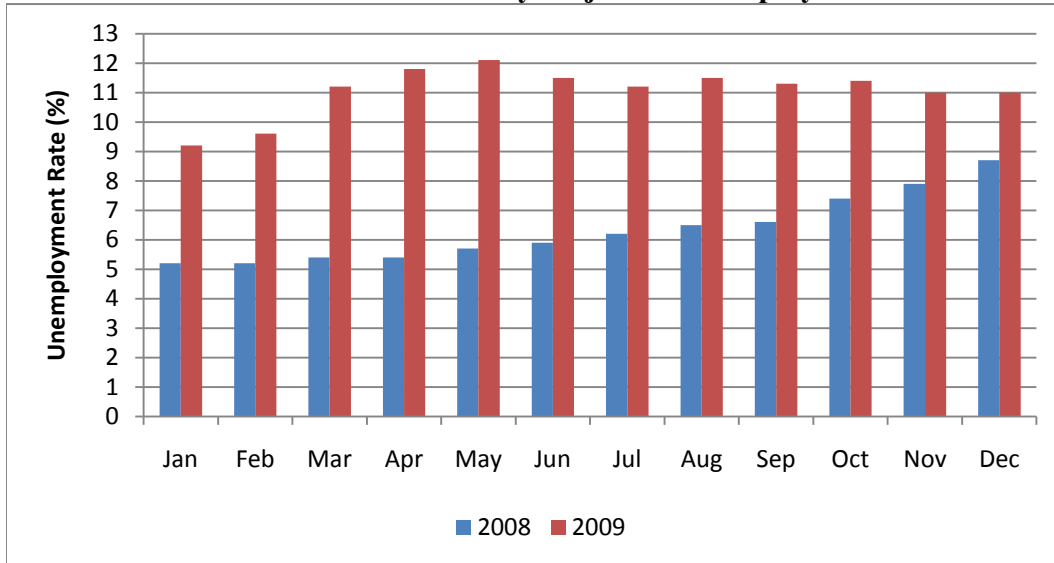


Salem MSA Monthly Economic Indicators, December 2009

Year-Over-Year Seasonally-Adjusted Unemployment Rate

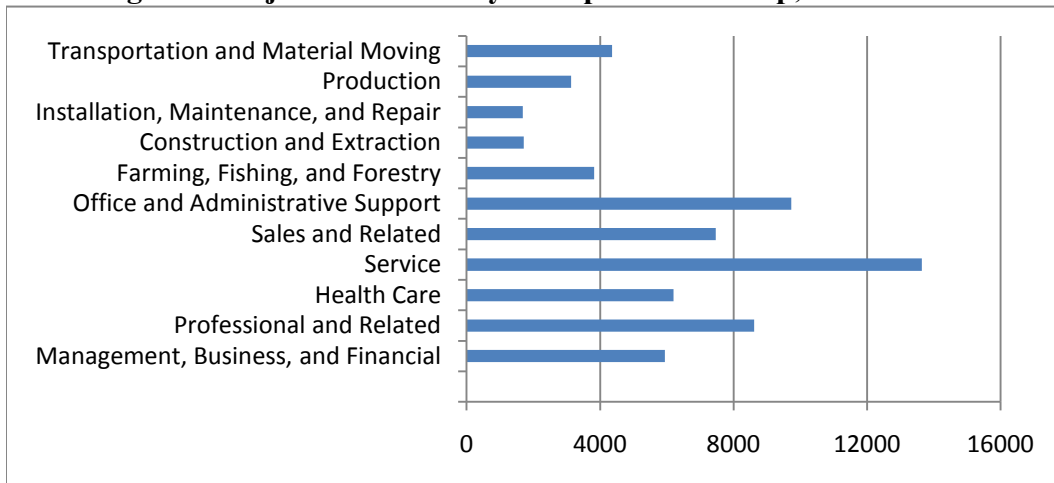


Employment by Industry

	Dec '09	Nov '09	Dec '08	Change (month)	Change (year)
Total private	100,400	101,300	107,300	-900	-6,900
Mining and Logging	1,100	1,100	1,200	0	-100
Construction	7,100	7,300	8,300	-200	-1,200
Manufacturing	10,400	11,000	12,400	-600	-2,000
Trade, Transport & Utilities	24,700	24,400	26,200	300	-1,500
Information	1,200	1,200	1,400	0	-200
Financial Activities	7,200	7,200	7,400	-100	-1,100
Prof. & Business Svcs.	11,200	11,300	12,300	-100	-1,100
Education & Health Svcs.	20,800	21,000	20,400	-200	400
Leisure and Hospitality	11,500	11,600	12,300	-100	-800
Other Services	5,200	5,200	5,400	0	-200

Source: Employment Department

Region 3 Projected Growth by Occupational Group, 2008-2018*



Oregon Employee Avg. Weekly Earnings by Industry

	Nov '09	Oct '09	Nov '08	Change (month)	Change (year)
Total Private	\$723	\$705	\$724	\$18	-\$1
Construction	\$931	\$925	\$913	\$6	\$18
Manufacturing	\$812	\$806	\$795	\$6	\$17
Trade, Transport & Utilities	\$657	\$648	\$661	\$9	-\$4
Financial Activities	\$974	\$913	\$924	\$61	\$50
Prof. & Business Services	\$840	\$801	\$875	\$39	-\$35
Education & Health Svcs.	\$678	\$657	\$706	\$21	-\$28
Leisure & Hospitality	\$328	\$321	\$316	\$7	\$12
Other Services	\$600	\$592	\$515	\$8	\$85

Source: Bureau of Labor Statistics

*Includes growth and replacement openings in Marion, Polk and Yamhill Counties